

Discover London...

trail **8**

map & introduction

Not to scale

CAMDEN AND ISLINGTON . . .
cool culture, canals and fine art...



4 FINCHLEY ROAD

HAMPSTEAD HEATH







CAMDEN TOWN

3 Highbury & Islington

5 ST JOHNS WOOD

1 KING'S CROSS

KEY TO MAP

-  Museum
-  Underground
-  Rail
-  Docklands Light Railway
-  Walk
-  Transport



the campaign for museums

Discover London Trails have been produced by the Campaign for Museums, a registered charity, in support of London's Smaller Museums and Galleries with funding from the Mayor of London and ALM London.

CAMDEN AND ISLINGTON . . .

Half/full day

This trail takes you to Camden Town with its lively weekend market at Camden Lock and to fashionable Islington with its trendy bars and thriving theatre and music scene.

Marvel at some wonderful art including a fascinating selection of Jewish Ceremonial Art, work by Anglo Jewish artists and an extensive collection of modern Italian paintings. You can also test your artistic talents at a community arts venue.

You will also enjoy a leisurely walk along Regent's Canal, opened in 1820, to link the Grand Junction Canal between little Venice in the west with the London docks at Limehouse in the east.

- 1 Jewish Museum**
- 2 London Canal Museum**
- 3 Estorick Collection of Modern Italian Art**
- 4 Camden Arts Centre**
- 5 Ben Uri Gallery**

...go to next page addresses & summary

Discover London...

trail **8**

addresses & summary

Jewish Museum

Raymond Burton House
129-131 Albert Street, NW1
www.jewishmuseum.org.uk
Open: 1000-1600 Mon-Thu; 1000-1700 Sun (closed Jewish Festivals and BH).
Admission charge
Tel: 020 7284 1997

A fine display of Jewish history and Ceremonial Art

London Canal Museum

12-13 New Wharf Road, N1
www.canalmuseum.org.uk
Open: 1000-1630 Tue-Sun, BH.
Admission charge
Tel: 020 7713 0836

London's only museum of inland waterways

Estorick Collection of Modern Italian Art

39a Canonbury Square, N1
www.estorickcollection.com
Open: 1100-1800 Wed-Sat; 1200-1700 Sun
Admission charge
Tel: 020 7704 9522

A collection of modern Italian art

Camden Arts Centre

Arkwright Road, NW3
www.camdenartscentre.org
Open: 1000-1800 Tue, Thur, Fri, Sat, Sun; 1000-2100 Wed
Tel: 020 7472 5500

Where ideas about contemporary art are made visible

Ben Uri Gallery

108a Boundary Road, St Johns Wood, NW1
www.benuri.org.uk
Open: 1000-1730 Mon-Fri; 1200-1600 Sun
Admission charge
Tel: 020 7604 3991

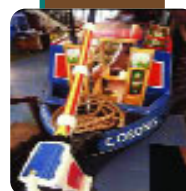
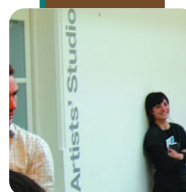
Europe's only dedicated Jewish museum of art

CHILDREN'S/FAMILY ACTIVITIES

Jewish Museum - entertainment and craft workshops explore Jewish life in a fun and informative way.

London Canal Museum - summer activities (for 6-12 year olds), activity sheets, children's reading corner.

Images
Outside Ben Uri Gallery
Ben Uri artist's studio
London Canal Museum



CAMDEN AND ISLINGTON . . .

TRAIL SUMMARY

This trail begins at Camden Town where you discover the history, culture and religious life of the Jewish community in Britain and beyond at the **Jewish Museum**. A short walk along the towpath to Camden Lock, the site of Camden Market takes you to the **London Canal Museum** for a fascinating insight into the history of canals.

You can either walk to your next stop or take the Victoria Line from King's Cross to Highbury & Islington for the **Estorick Collection of Modern Italian Art**. This gallery brings together some of the finest and most important works created by Italian artists during the first half of the 20th century and is Britain's only gallery devoted to modern Italian art.

Time permitting, explore fashionable Islington, before travelling on the North London Line to engage your artistic talents at the recently renovated **Camden Arts Centre** and a visit to the **Ben Uri Gallery** in St John's Wood. This has the world's largest collection of work by Anglo Jewish artists. With a fascinating 90-year history, this gallery is Britain's longest established Jewish arts and cultural institution.

Plan your own journey by visiting Transport for London's website www.tfl.gov.uk.

Discover London...



the trail in detail

CAMDEN AND ISLINGTON . . .

The trail begins at the **Jewish Museum**, located in an elegant listed building in Camden Town. From the Underground station, walk up Parkway and third left into Albert Street. Founded in 1932 and moving to Camden Town in 1995, this is the story of the Jewish community in Britain, from the Norman Conquest to recent times. It has one of the finest collections of Judaica in the world including a superb collection of Jewish Ceremonial Art that illustrates and explains Jewish religious practice through objects of rarity and beauty. A highlight of the collection is a carved and gilded 16th century Venetian synagogue ark made of walnut.

Now amalgamated with the former London Museum of Jewish Life, the Jewish Museum is located over two sites (the nearest station to the other site with the museum's social history collection is Finchley Central). See the Immigration trail for more details.

Walk to Camden Lock, the site of the famous weekend market, and along the towpath for approximately 25 minutes to the **London**

Canal Museum. (Alternatively, take the Northern Line a couple of stops to King's Cross). Situated at Battlebridge Basin on Regent's Canal, you see inside a narrowboat cabin and discover the history of London's canals, the cargoes carried; the people who lived and worked on the waterways and the horses that pulled their boats. *(NB Kings Cross Station and the area to the north is undergoing major redevelopment.)*

From here, take the short walk back to King's Cross station and the Victoria Line one stop to Highbury & Islington. From the station, walk down Canonbury to the **Estorick Collection of Modern Art** in a Grade 2 listed Georgian building at Canonbury Square. This house was purchased in 1994 and refurbished with a substantial grant from the Heritage Lottery Fund to house the collection and art library finally opening in 1998.

Eric Estorick (1913-93), an American sociologist and writer began to collect works of art when he came to live in England after the Second World War. During his honeymoon in

Switzerland, Estorick and his wife Salome discovered Umberto Boccioni's book 'Futurist Painting and Sculpture' (1914) which marked the beginning of his passion for Italian art. The couple's collection of Italian art took shape between 1953 and 1958 and was shown in a series of major public exhibitions both in Britain and abroad, including one at the Tate Gallery in 1956. In 1960, Estorick founded the Grosvenor Gallery in London. Six months prior to his death Estorick set up the Eric and Salome Estorick Foundation, to which he donated all his Italian works.

The collection is known internationally for its outstanding core of Futurist works as well as figurative art and sculpture dating from 1890 to the 1950s. Founded in 1909 by the poet F T Marinetti, Futurism remains Italy's most significant contribution to 20th century European culture. The acknowledged Futurist masterpieces of the collection are drawn from this pioneering period (1909-16) and features paintings by Futurism's main protagonists including Giacomo Balla, Umberto Boccioni, Carlo Carrà, Luigi Russolo and Gino Severini.

Discover London...



the trail in detail

CAMDEN AND ISLINGTON . . .

There is a licensed Italian café with outdoor seating in a beautifully landscaped garden and many other places to eat and drink in lively Islington. Most of the action takes place on Upper Street and the roads immediately around it. Islington also boasts two theatres - the King's Head Theatre Pub and the Almeida Theatre - and the Business Design Centre built on the site of the old 19th century Royal Agricultural Hall. There is a variety of shops in the locality and a shopping centre close to the Angel.

From Highbury & Islington, take the North London Line to Finchley Road & Frognal for the **Camden Arts Centre**. Here, you can actively engage with art, artists and ideas through a challenging and frequently changing programme of exhibitions. The centre has recently been radically renovated to create a fully accessible arts venue catering for all members of the community. In addition to new work by influential and acclaimed artists, the centre also champions the work of exceptional, less established artists. Exhibitions for 2006 include 'Bas Jan Ader:

All is Falling' (until 2 July) and 'Archipeinture: Painters build architecture' (14 July-17 September). There is also a café with lovely views of the newly landscaped garden.

Walk (or take a bus) down Finchley Road and turn right into Boundary Road for the **Ben Uri Gallery**. This is Europe's only dedicated Jewish museum of art working in partnership with both secular and Jewish museums both in the UK and internationally.

Britain's oldest Jewish cultural organisation, the Ben Uri Art Society, was established in London's East End in 1915. Founded by the charismatic Russian-born Jewish artist, Lazar Berson, it provided support for the many Jewish artists and craftspeople who flourished there in the face of poverty, anti-semitism and isolation from mainstream culture. Berson gave the organisation its name, Ben Uri, in celebration of Bezalel Ben Uri, the master-craftsman who oversaw the building of the biblical Ark of the Covenant that held the stones on which the Ten Commandments were inscribed.

It aims to inform the widest public in Britain and abroad of the life, work and contribution of British and European artists of Jewish descent and their contemporaries.

Following its re-launch exhibition 'The Ben Uri Story, from Art Society to Museum' in January 2001 at Phillips, New Bond Street, the museum - after six years without a home - acquired this new gallery in St John's Wood. Important exhibitions held during the last four years have seen the Ben Uri re-establish its national and international position. The museum plans to move to the heart of central London alongside other great British galleries, to maximise access and impact.

Exhibitions in 2006 include 'Up North' (17 May-18 June) showcasing artists and artistic developments north of Watford and 'Dora Holzhandler Retrospective' (25 June-6 August).

The nearest Underground station is St John's Wood back in Finchley Road.