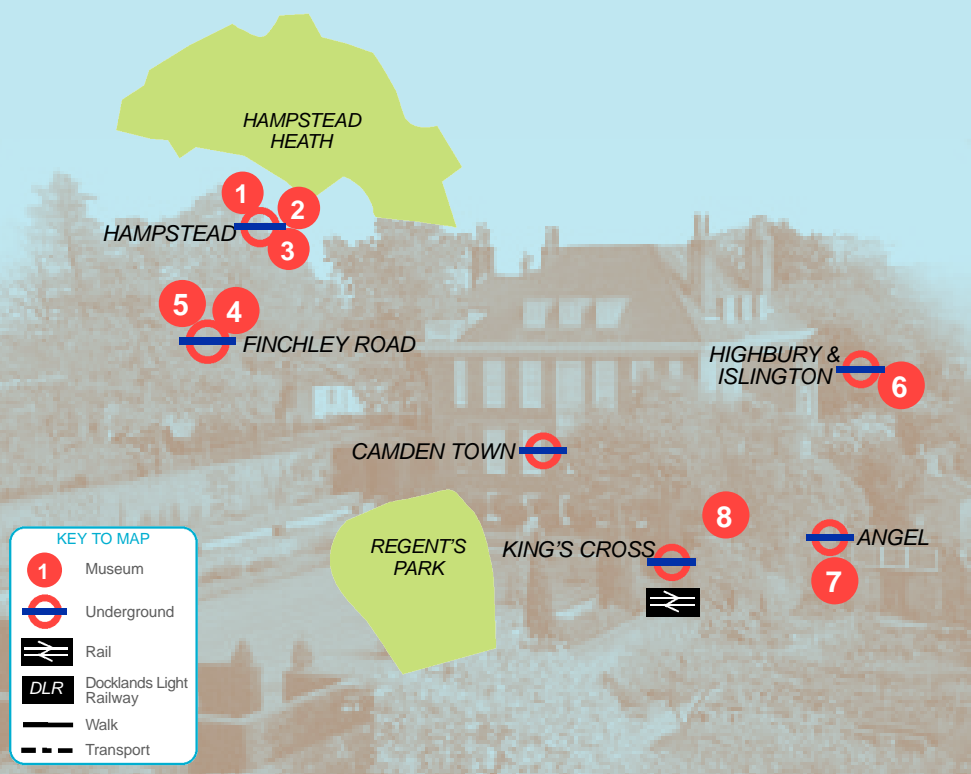


Not to scale

HAMPSTEAD AND ISLINGTON . . .
*Art and architecture, historic houses
 and welcoming pubs ...*



KEY TO MAP

- Museum
- Underground
- Rail
- Docklands Light Railway
- Walk
- Transport



HAMPSTEAD AND ISLINGTON . . .

Full/half days

This trail takes you to Hampstead, in the north west of London, with its charming village atmosphere. It has attracted writers and artists since Georgian times and retained its desirability as a residential area. It also explores busy Islington, so it divides perfectly into two halves.

Hampstead boasts mansions and townhouses and some lovely narrow streets with a range of cafes, pubs, restaurants and specialist shops as well as the Heath that separates it from Highgate, its neighbouring hilltop village. On this trail, you will see some wonderful architecture and beautiful buildings – and never be far away from pubs filled with character should you require refreshment!

Islington's Upper Street offers strong competition with cafes and antique markets. You also have the opportunity of marvelling at an extensive collection of modern Italian paintings, visiting the new Islington Museum before learning about the history of canals.

Trail Part 1

- 1 **Fenton House**
- 2 **Burgh House**
- 3 **2 Willow Road**
- 4 **Freud Museum**
- 5 **Camden Arts Centre**

Trail Part 2

- 6 **Estorick Collection of Modern Art**
- 7 **Islington Museum**
- 8 **London Canal Museum**

HAMPSTEAD AND ISLINGTON . . .

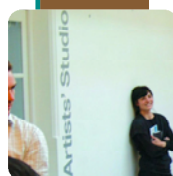
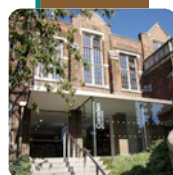
TRAIL SUMMARY

You begin at Hampstead underground station for a short walk to **Fenton House** a charming William and Mary merchant house before visiting the Hampstead Museum within **Burgh House** a Grade 1 listed building in the heart of the village. Next stop and well worth making the effort for is the very unusual National Trust property, **2 Willow Road**, a 1930's modernist house designed by Erno Goldfinger for his family home.

From here, stroll back into the centre of Hampstead and try out one of the lovely pubs mentioned within the detail of the trail or walk to the **Freud Museum** – take a bus if you prefer – for a fascinating insight into the life of Sigmund Freud. Walk to **Camden Arts Centre** to engage your artistic talents and enjoy refreshments at the café.

From here, take the London Overground to Highbury & Islington for the **Estorick Collection of Modern Art**, a gallery bringing together some of the finest and most important works created by Italian artists during the first half of the 20th century and Britain's only gallery devoted to modern Italian art. Not far away is the new Islington Museum, a local collection in Finsbury Library. Travel the short distance to King's Cross and visit the **London Canal Museum** with its fascinating insight into the history of canals.

Plan your own journey by visiting Transport for London's website www.tfl.gov.uk.



Fenton House

Hampstead Grove, NW3
www.nationaltrust.org.uk
 Open: 1100-1700 Sat, Sun; 1400-1700, Wed-Fri
Tel: 020 7435 3471
 Admission charge
 Handsome 17th century merchant's house

Burgh House

New End Square, NW3
www.burghhouse.org.uk
 Open: 1200-1700 Wed-Sun
Tel: 020 7431 0144
 Queen Anne House with an intriguing local history museum

2 Willow Road

Willow Road, NW3
www.nationaltrust.org.uk
 Open: 1200-1700 Thu/Fri; 1100-1700 Sat (Entry by timed tour only 1100 (Sat), 1200, 1300, 1400)
Tel: 020 7435 6166
 Admission charge
 1930s modernist home designed by Goldfinger

Freud Museum

20 Maresfield Gardens, NW3
www.freud.org.uk
 Open: 1200-1700 Wed-Sun
Tel: 020 7435 2002
 Admission charge
 Arts and Crafts House where Freud spent the last years of his life

Camden Arts Centre

Arkwright Road, NW3
www.camdenartscentre.org
 Open: 1000-1800 Tue, Thur, Fri, Sat, Sun; 1000-2100 Wed
Tel: 020 7472 5500
 Where ideas about contemporary art are made visible

Estorick Collection of Modern Italian Art

39a Canonbury Square, N1
www.estorickcollection.com
 Open: 1100-1800 Wed-Sat; 1200-1700 Sun
Tel: 020 7704 9522
 Admission charge
 A collection of modern Italian art

Islington Museum (from 25 April)

www.islington.gov.uk/leisure/artsandentertainment/Museums/IslingtonMuseum/default.asp
 245 St John Street (adjacent Finsbury Library).
 Islington, London EC1V 4NB
 Open: Mon, Tues, Thurs, Sat 0900-1700
Tel 020 7527 3235

London Canal Museum

12-13 New Wharf Road, N1
www.canalmuseum.org.uk
 Open: 1000-1630 Tue-Sun, BH
Tel: 020 7713 0836
 Admission charge
 London's only museum of inland waterways

Images
 Fenton House
 Camden Arts Centre
 Freud Museum
 Ben Uri artist's studio
 London Canal Museum

HAMPSTEAD AND ISLINGTON . . .

Trail Part 1

From Hampstead station (Northern Line), walk along Holly Hill and right into Hampstead Grove for **Fenton House**, a charming William and Mary merchant's house built in 1693 with fine wrought iron gates at its entrance. Set in winding streets, this, the oldest mansion in Hampstead village, contains an outstanding collection of porcelain largely accumulated by Lady Binning who bequeathed the house and its contents to the National Trust in 1952.

A specialised collection of Benton Fletcher early keyboard instruments, most in working order, includes a harpsichord dating from 1612, said to have been played by Handel. There is a new collection of English paintings bequeathed by the late actor Peter Barkworth. The delightful walled garden includes fine displays of roses, an orchard and a working kitchen garden.

Nearby is a timeless beautifully maintained old pub **The Holly Bush**, in its own little square Holly Mount. It can be reached on foot up a flight of stone steps between 73 and 75 Heath Street, opposite the tube.

Back in the heart of Hampstead very close to the Underground station is **Burgh House** in New End Square. It is a handsome Queen Anne House originally built in 1704 taking its name from the Reverend Allatson Burgh, a 19th century resident. Dr William Gibbons, chief physician to the

Hampstead spa lived in the house in the 1720s; and more recently it was home to the son-in-law of the late Rudyard Kipling. Since 1979, the independent Burgh House Trust has run the house as the **Hampstead Museum**, illustrating the history of the area. In 2006, an £800,000 scheme brought the standards of display and conservation up to modern requirements with the addition of a new extension. Refreshments from the licensed café can be enjoyed on the terrace overlooking the pretty garden.

The collection within the museum includes original works by famous artists such as Helen Allingham, George Charlton, CRW Nevinson and Donald Towner. Other highlights include samples of Marcel Breuer's Isokon furniture, the Mayor of Hampstead's chair, the flag of the first scout troop in the country – and a plaster penguin signed by famous authors in 1960! There are also temporary exhibitions and events.

Ye Olde White Bear, situated on a narrow pavement at the bottom of New End offers good pub food in its friendly old-fashioned establishment.

It is approximately a 10 minute (uphill) walk to the very interesting National Trust property **2 Willow Road**, designed and built in 1939 by Erno Goldfinger as his family home. In the centre of a terrace of three, the house is one of Britain's most important examples of Modernist architecture and is filled with furniture also designed by Goldfinger.

The art collection includes a number of significant British and European 20th-century works by Bridget Riley, Max Ernst and Henry Moore.

You can walk along Devonshire Hill, into Thurlow Road, right into Lyndhurst Road, left into Fitzjohn's Avenue to Maresfield Gardens to the **Freud Museum**. Alternatively, walk back into the centre of Hampstead and take a bus towards Finchley Road. This was home to Sigmund Freud and his family when they escaped from Nazi-occupied Vienna in 1938. The family recreated the atmosphere of Freud's Vienna consulting rooms with the possessions they brought with them. After he died in 1939, Freud's daughter Anna – a pioneer of psychoanalysis – kept the house as it was until she died in 1982.

The house was opened as a museum dedicated to Freud in 1986. It retains the atmosphere of a family home, with much of the original furniture and personal effects including a remarkable collection of antiques and a fine collection of 18th and 19th century Austrian painted furniture. The centrepiece of the museum is Freud's library and his study, preserved just as it was in his lifetime with his famous couch and desk. The museum is now being developed as a cultural and research centre of outstanding value to the professional community.

From here, walk to the **Camden Arts Centre** (via Rosemont Road, right into Finchley Road and right again into Arkwright Road) where you can actively

HAMPSTEAD AND ISLINGTON . . .

engage with art, artists and ideas through a challenging and frequently changing programme of exhibitions. Built in 1897, originally a library, the Grade 2 listed building became an arts centre in the 1960s. Following a refurbishment by Tony Fretton Architects, Camden Arts Centre re-opened to the public in 2004. The beautifully designed building combines the original Victorian gothic features with a contemporary urban design to enhance space and light. The galleries show artists new to the art scene, well-known figures moving in an unexpected direction and artists who inspire today's practitioners. The programme includes talks from artists; workshops led by artists and a new series of live art performances. A café has lovely views of the newly landscaped garden.

Trail Part 2

Take the London Overground from Finchley Road & Frognal station to Highbury & Islington for the **Estorick Collection of Modern Art**, a Grade 2 listed Georgian building. This house was purchased in 1994 and refurbished with a substantial grant from the Heritage Lottery Fund to house the collection and art library finally opening in 1998.

Eric Estorick (1913-93), an American sociologist and writer began to collect works of art when he came to live in England after the Second World War. During his honeymoon in Switzerland, Estorick and his wife Salome discovered Umberto Boccioni's book *Futurist Painting and Sculpture* (1914) which marked the beginning of his passion

for Italian art. The couple's collection of Italian art took shape between 1953 and 1958 and was shown in a series of major public exhibitions both in Britain and abroad, including one at the Tate Gallery in 1956. In 1960, Estorick founded the Grosvenor Gallery in London. Six months prior to his death Estorick set up the Eric and Salome Estorick Foundation to which he donated all his Italian works.

The collection is known internationally for its outstanding core of Futurist works as well as figurative art and sculpture dating from 1890 to the 1950s. Founded in 1909 by the poet F T Marinetti, Futurism remains Italy's most significant contribution to 20th century European culture. The acknowledged Futurist masterpieces of the collection are drawn from this pioneering period (1909-16) and features paintings by Futurism's main protagonists including Giacomo Balla, Umberto Boccioni, Carlo Carrà, Luigi Russolo and Gino Severini. A licensed Italian café with outdoor seating is situated in a beautifully landscaped garden.

Take a stroll down Upper Street to absorb the vibrant atmosphere, passing numerous good eating places and trendy shops, as well as the King's Head Theatre Pub and the well regarded Almeida Theatre – and the Business Design Centre built on the site of the old 19th century Royal Agricultural Hall. The Islington Museum was previously in Islington Town Hall but has now moved to St. John Street, past the Angel Tube

station. On the way you will also pass the famous Camden Passage antiques market. You can take a bus for part of the way if the walk is too much. Go straight on past Angel and soon you will be in St John Street. The new **Islington Museum** next to Finsbury Library reopened in April 2008 with a display of its collection of over 500 objects and documents of local and historical significance, telling the story of Islington.

Go back to the Angel and take the Northern Line one stop to King's Cross for the **London Canal Museum**. Situated at Battlebridge Basin on Regent's Canal, you will see inside a narrowboat cabin and discover the history of London's canals, the cargoes carried; the people who lived and worked on the waterways and the horses that pulled their boats.

The London Canal Museum also makes a good starting point for a walk along the Regent's Canal towards Camden and Regents Park, or in the other direction towards East London and Docklands.

CHILDREN'S/FAMILY ACTIVITIES

Fenton House – children's quiz and trail
Burgh House – child friendly exhibits and a children's trail
2 Willow Road – children's quiz and trail
London Canal Museum – summer activities (for 6-12 year olds), activity sheets, children's reading corner